

CREATING
A CLIMATE
FOR GROWTH

PRIVA



> PRIVA BUILDING MANAGEMENT

Flexible operation for every user



PRIVA BUILDING MANAGEMENT

> FLEXIBLE OPERATION

FOR EVERY USER

Management of a building's indoor climate is increasingly included in the responsibilities of the facilities manager, assisted by a technical expert. In order to effectively and efficiently fulfil these responsibilities they need a single system that is time-saving, cost-effective and importantly, user-friendly.

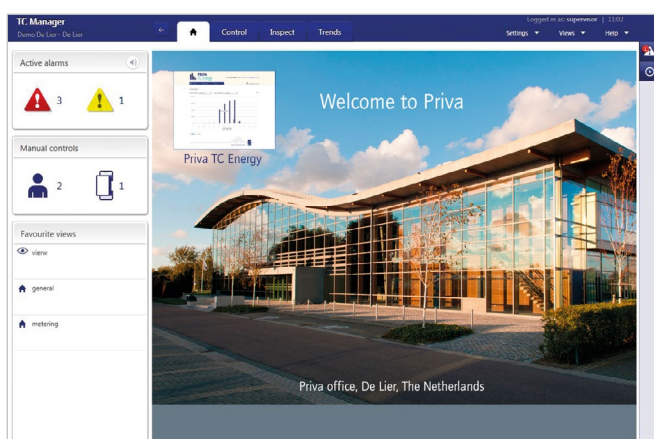
This requirement was a key objective during the development of new Priva building management systems. With the introduction of Priva Blue ID and Top Control 8, Priva takes the next step in creating a better user experience for building management systems, offering user interfaces that are less "technical," and making it easy to work with Top Control 8, from the very first day.

Developing the Top Control 8 family, we've included several tools to help you manage your building and installations:

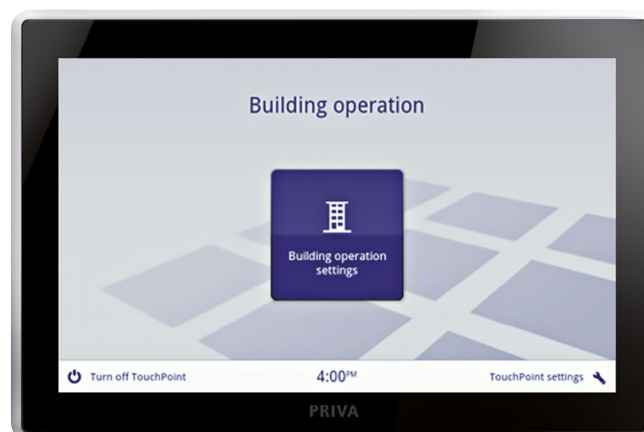
- > Priva TC Manager – this web-based graphical user interface of the building management system makes it easier to control the indoor climate and manage the building's climate systems. This tool was developed for building managers, facility managers, and service staff.
- > Priva Blue ID Touchpoint for room operation – an amazingly user-friendly interface on a high-quality touchscreen developed for users of any type of space in a building.

- > Priva Blue ID Touchpoint for building operation – a graphical interface for smaller installations or parts of a larger building, aimed at personnel managing the building as only part of their duties.
- > Priva Blue ID Touchpoint for installation operation – a technical interface for installers and other technical personnel to manage the Priva Blue ID installation from the control panel fascia.

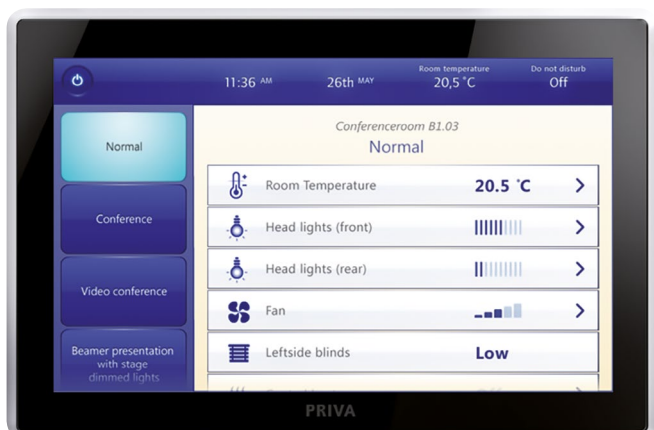
The combination of these user interfaces opens the door to an array of uses and features to make building management easier for every user, whatever their level of technical knowledge.



Priva TC Manager



Priva Blue ID Touchpoint for building operation



Priva Blue ID Touchpoint for room operation



Priva Blue ID Touchpoint for installation operation

PRIVA TC MANAGER

On-the-go access

The Priva Blue ID controller comes with a built-in web server with Priva TC Manager. TC Manager is the graphical user interface for managing user comfort and the building's climate systems. Users may log into TC Manager from any PC in the network using a web browser (Microsoft Internet Explorer 11). No other software is needed.

Extensive filtering and sorting of alarms

Using the extensive filtering and sorting feature of TC Manager, a user can access the information they need at any time. This way, technical specialists can analyse data more easily and solve problems faster.

Insight into user actions

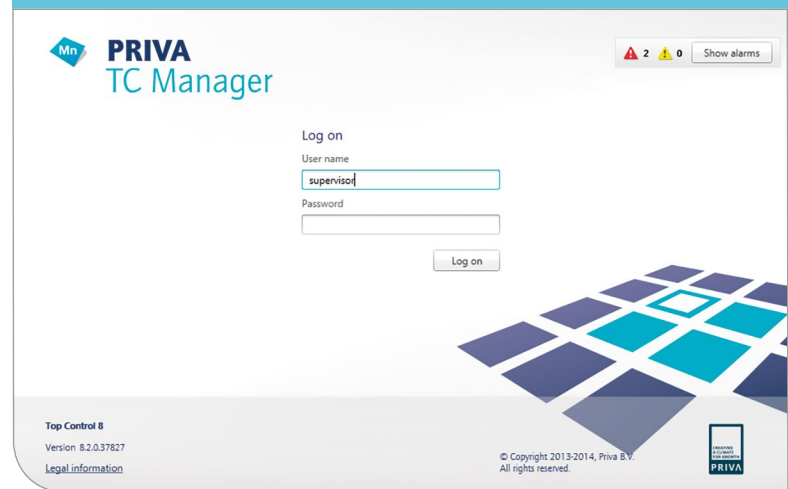
One of the features of TC Manager is the option of saving user information such as names, contact details, and even a picture. The system will record who applied which changes, creating an overview that is indispensable when monitoring user actions. This allows the building manager to quickly consult those who perform maintenance on the building. In addition, service companies can quickly discover who carried out earlier maintenance work and at what stage.

Bird's-eye view of the entire project

A user or technical specialists can enter the system via any controller, thanks to the Ethernet connection. Once in, they receive a clear overview of alarms, historical information, changes, and manual modes. The service company no longer needs full insight into the physical locations of controllers and control panels; what's more, information is always stored on more than one controller for operational security.

Instant alarms overview

The TC Manager log-in screen displays any active alarms, so that the building manager is alerted to any urgent action that needs taking even before they are logged in.

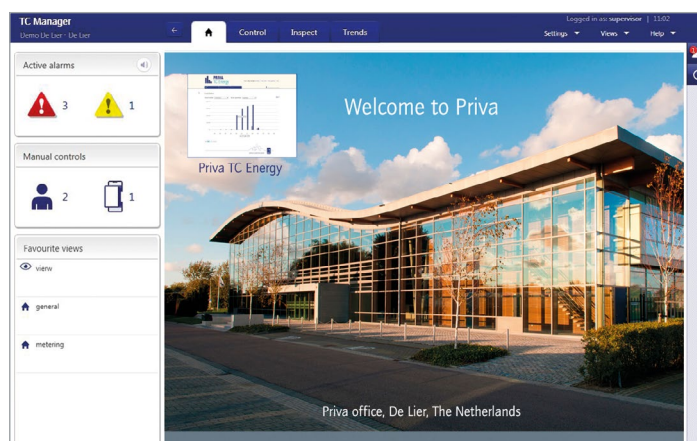




KPI dashboard with widgets

The TC Manager dashboard offers users various widgets for a quick and easy overview of the building's performance. It's a powerful tool that can give any user the complete overview they need. Several widgets can be displayed on the dashboard:

- > Homepage: The background of this central page can be customized according to your preference.
- > Alarm widget: An overview of the latest alarms.
- > Manual operation widget: An overview of the installation functions that are set to manual operation.
- > Favorite views: A list of popular views that the user can set for quick navigation.



Item	Type	Title/Description	User	Date/Time	Action
★	👁️	Inspect / Views 1	s	05/12/2014 13:09:23	🗑️
★	📊	Trends / Analyse trends 1	s	05/12/2014 13:05:41	🗑️
★	👤	Inspect / Manual controls 2	s	05/12/2014 13:24:15	🗑️
★	👤	Inspect / Manual controls 1	s	05/12/2014 09:29:39	🗑️
★	⚙️	Boiler	s	05/12/2014 09:28:06	🗑️
★	📄	Logging	s	05/12/2014 08:09:12	🗑️
★	⚙️	Control installation	s	05/12/2014 08:07:15	🗑️

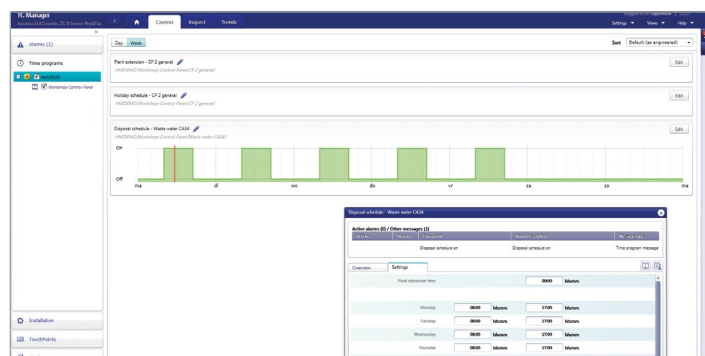
Views: Crucial information at a glance

TC Manager lets users set customized screens for a number of applications, optionally using filters, and save them as a view. Trend data is one of these screens.



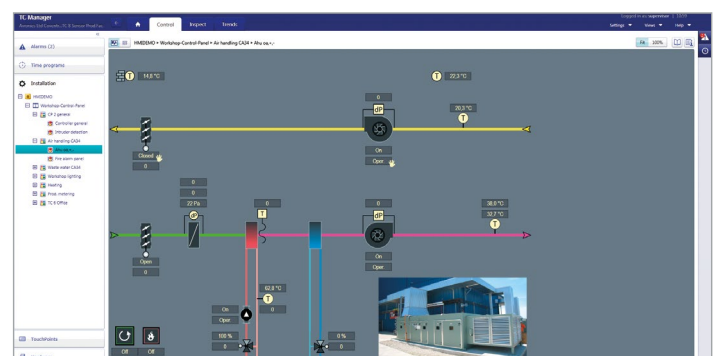
Time programs

TC Manager displays time programs for a building's departments, mechanical plant and systems, via a simple graphic. Installers and building managers don't need to waste time searching for the right time program. Instead, they have an instant view of when installations switch on or off. You can even combine different time programs to compare them.



Clear plant graphics

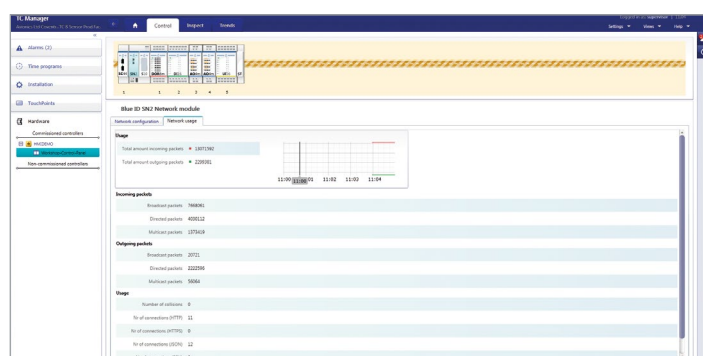
The Priva Blue ID plant graphics are available in the familiar Priva style, but also in the freshened-up style with sleek new icons. These diagrams make use of pop-ups that let users apply settings, read the documentation, or check trend graphs.





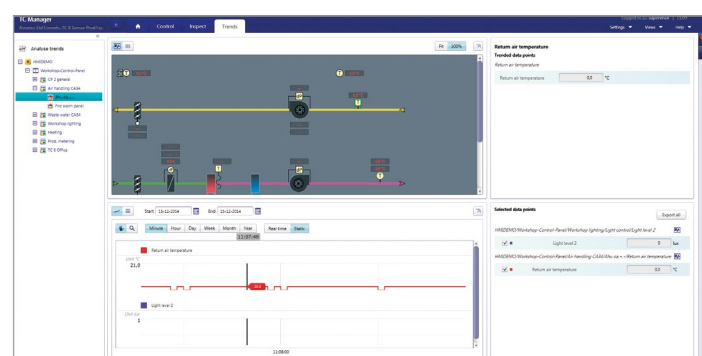
Use software to remotely control hardware

The dynamic hardware overview is a remarkable feature of TC Manager. Using this function, the user can access a schematic overview of the control panel. Thanks to the electronic switches inside the modules, parts of the installation that have been set to manual mode using the switches on the I/O modules can be set back to automatic operation remotely. This makes for easy correction of operation errors and omissions.



Trend graphs for added analytical power

TC Manager includes a graph feature that allows 16 trend lines to be placed in one graphical overview at the same time. This gives the installer who is responsible for building performance instant insight into behavior and any anomalies. Even for users with limited technical knowledge, this feature can serve as a simple tool to carry out analyses.



PRIVA BLUE ID TOUCHPOINT

Priva Blue ID Touchpoint: control spaces and buildings in style

For the intuitive operation of spaces and smaller buildings, Priva developed Blue ID Touchpoint, a high-quality, high-resolution 7-inch touchscreen.

Thanks to a simple connection, using one Ethernet cable for power as well as data, it's an especially flexible addition to any building. Priva offers Touchpoint in various editions, based on your personal preferences.

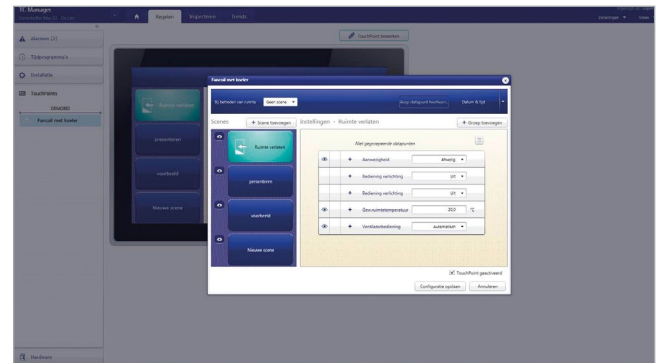
Thanks to the easily configurable user interface, a building manager can determine himself whether he uses the Touchpoint for room, building or installation operation.



USER INTERFACE FOR ROOM CONTROL

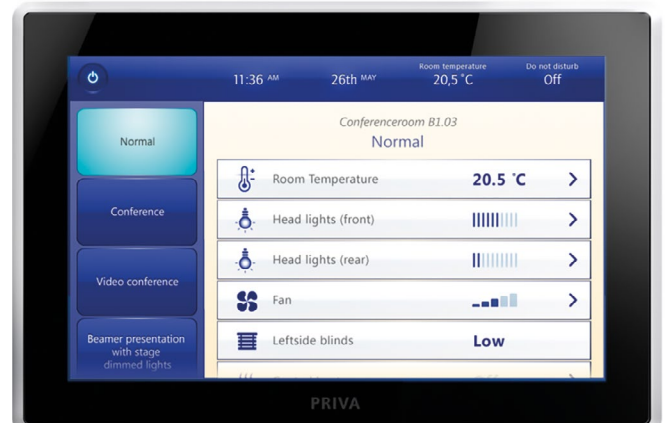
Configurable screens for added ease of use

The building manager can easily configure the room control interface on Priva Blue ID Touchpoint using TC Manager so only applicable information is shown. In one room, adjustments for lighting will suffice; in another, adjustments of heating and sun blinds should be available via the user interface as well.



Room control using customer-friendly scenes

The building manager or installer can also select and edit various scenes for Priva Blue ID Touchpoint in TC Manager using the templates provided. Without requiring additional help from programmers, this allows the system to adapt to any personal preference, unique situation, or temporary requirement.



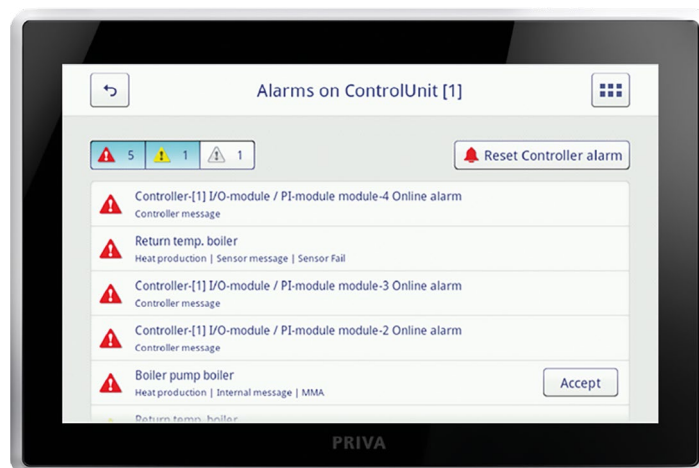


USER INTERFACE FOR BUILDING OPERATION

This relatively simple interface is exceptionally well-suited to smaller installations, especially in buildings managed by people whose duties include other tasks besides building management.

Information and features that are relevant to you

This interface only shows features that are essential to the building, such as climate controls and lighting in common spaces. Its configuration is prepared by the installer based on user needs, building characteristics, and the installation. During service operations, the installer can control the installation from their own technical management environment, in which all features are available.



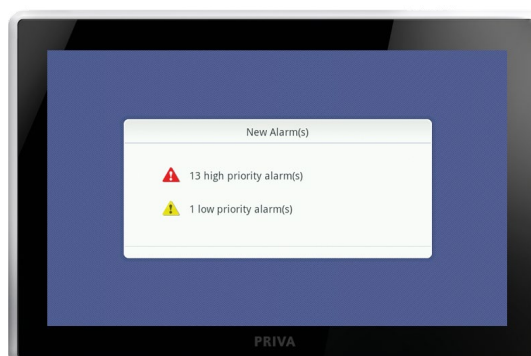
Safe and accessible

In many cases, the Priva Blue ID TouchPoint unit will be installed in a publicly accessible space. To avoid changes to the system settings by a visitor or a non-authorized user, your Touchpoint can be secured with a PIN.



USER INTERFACE FOR INSTALLATION CONTROL

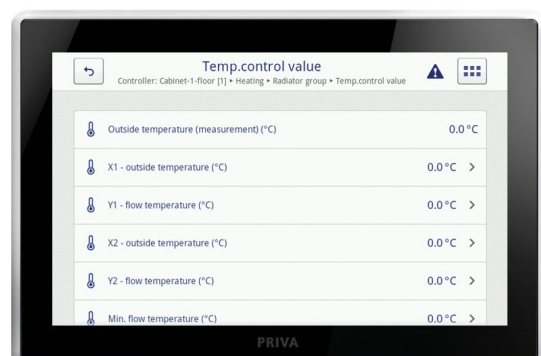
This interface gives (technical) users of the installation direct access to the technical data from each controller in the system, straight from the Priva Blue ID Touchpoint on the control panel. The interface is based on the project set-up, making it particularly suitable for users who understand the technical structure of the project.





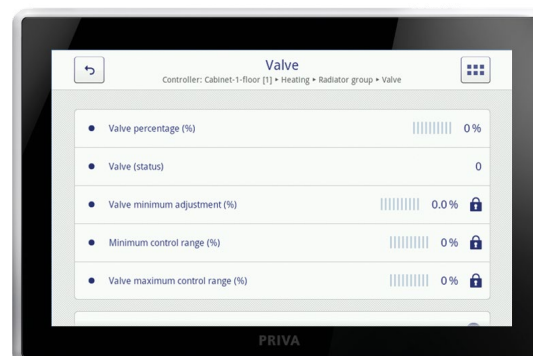
Speed over bespoke

This interface offers service staff all the features they need to manage controllers in situ. Its configuration is automatically generated based on the set-up of the project. This saves the installer a considerable amount of time, as they don't need to set up a configuration or devise a clear navigation system.



Accessible and secure

The Priva Blue ID Touchpoint with its installation management interface will most often be installed in the technical room or in the control panel fascia. To avoid changes to the system settings by non-authorised users, your Touchpoint can be secured with a PIN.



Priva (Head Office)

Zijlweg 3
2678 LC De Lier
The Netherlands

Postbus 18
2678 ZG De Lier
The Netherlands

E contact.priva@priva.nl
I www.priva.com

Priva UK Ltd.

34 Clarendon Road
Watford WD17 1JJ
United Kingdom

T +44 1923 813 480E
E contact.priva@priva.co.uk
I www.priva.co.uk

